

## Sanitization



Waterco's Electrochlor Mineral Chlorinator makes your pool smarter by automatically taking care of sanitisation, filtration and auxiliary equipment so you don't have to! This one device will monitor and display everything you need to know about your pool in real time.

- Energy-saving power pack and battery backup
- Self-cleaning electrolytic salt cell
- Low salt alarms and pump protection
- Variable speed pump control
- Dual general power outlets

### ELECTROCHLOR MINERAL ECO CHLORINATORS

Part Number	Product Description	Nominal Size
6450135	Electrochlor Mineral ECO Power Pack	Fit 20 - 30 g/hr
6449720	Cell Plates & Housing - 2000	20 g/hr
6449725	Cell Plates & Housing - 2500	25 g/hr
6449730	Cell Plates & Housing - 3000	30 g/hr

Step 1: Choose a power pack.

Step 2: Choose cell plate & housing following output needed.

### Technical Specifications

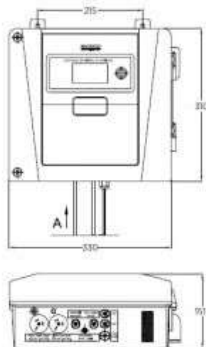
Model	Chlorine Production (g/hr)	Max Pool Capacity (L) Climate	
		Temperate	Tropical
Electrochlor Mineral 2000	20	60,000	48,000
Electrochlor Mineral 2500	25	80,000	60,000
Electrochlor Mineral 3000	30	100,000	72,000

\*Pool capacity is based on domestic pool. For commercial pool, please approach our friendly sales representatives.

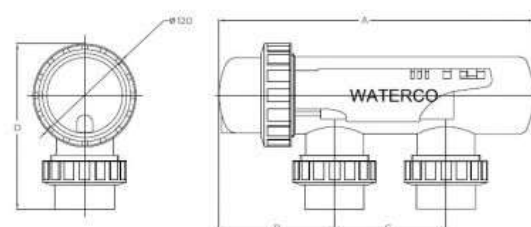
	2000	2500	3000
Primary Input (Volts)/ Frequency (Hz)	170-264V / 47-64 Hz	170-264V / 47-64 Hz	170-264V / 47-64 Hz
Input Power (W)	105	115	130
Output Current (A)	5.4 (DC)	5.8 (DC)	6.0 (DC)
Maximum Total Current (A)	10	10	10
Pump Outlet Maximum (A)	8	8	8
Cell Voltage (V)	21	21	21
Degree of Protection	IP23	IP23	IP23

These chlorinators are approved and conform to AS3136 Swimming Pool Equipment, as a prescribed article under Australian Registration. These Chlorinators conform to the Australian Electromagnetic Compatibility Standard marked by the C-tick.

### Power Pack Dimensions



### Chlorinator Cell Dimensions



Model	A (mm)	B (mm)	C (mm)	D (mm)
20 g/h,	367	134.5	130.0	192.5
25 g/h,				
30 g/h				



# Sanitization



## MINERAL CRYSTALS

Part Number	Product Description	Pack Size
352421	Aquahealth Mineral Crystals	pallet - 36 20kg

### Adding Mineral Crystals to the Pool

Allow the pool to reach a salt level of 4,000 ppm, then add the recommended amount of Mineral Crystals as per table below.

Starting with 4,000 ppm of Pool Salt							
Pool Size (L)	10,000	20,000	30,000	40,000	50,000	80,000	100,000
Add Mineral Crystals (kg)	25	50	75	100	125	200	250
Targets							
Pool Salt Level (ppm)	4,000	4,000	4,000	4,000	4,000	4,000	4,000
Mineral (ppm)	1,200	1,200	1,200	1,200	1,200	1,200	1,200



The real "Chlorine smell" actually comes from Chloramines? Chloramines is formed from reaction between Free Chlorine and Ammonia. Chloramines is the real culprit behind bad smell, dry skin, red eyes, and is known to aggravate Eczema.

So, by maintaining sufficient Free Chlorine in a pool system ALL the time is essential. With a well designed system, salt chlorinator can even be used for toddlers swim centre.



Motiongroup.co.th  
02-115-1376