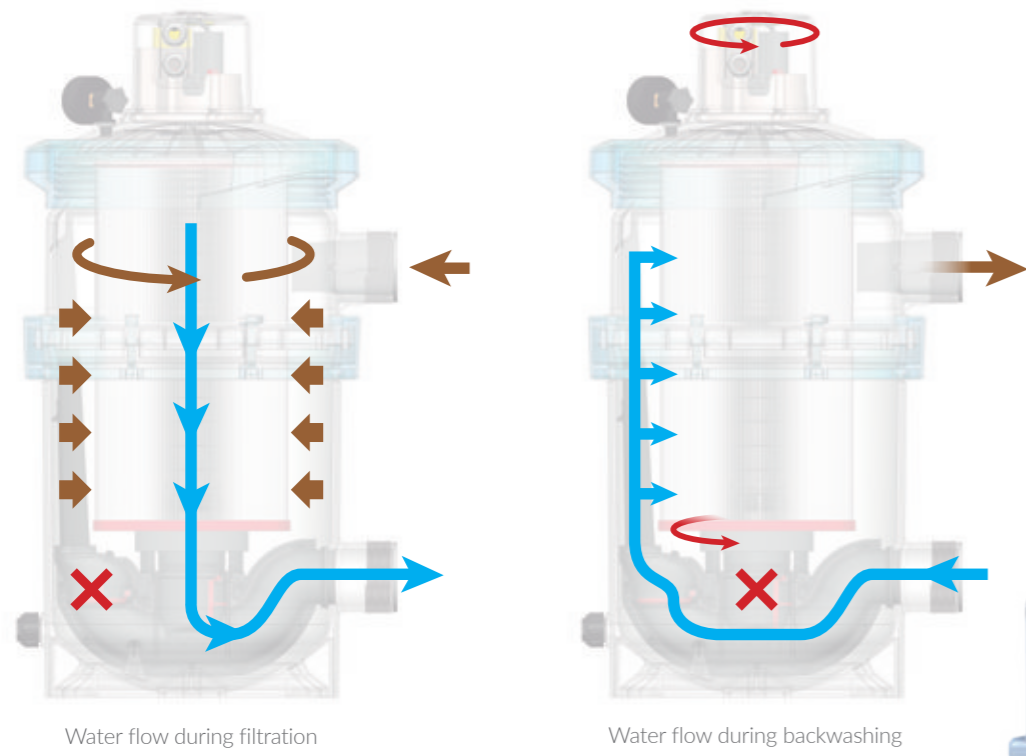


## Self-cleaning filter

### Filters reinvented

The shower starts to work in the backwashing position. In order to ensure the filter medium is properly backwashed, turn the lever on top of the filter.

The lever on top of the filter works manually or automatically depending on the NanoFiber range chosen. By turning the lever in either manual or automatic mode, the filter medium also turns, which ensures a thorough backwash.

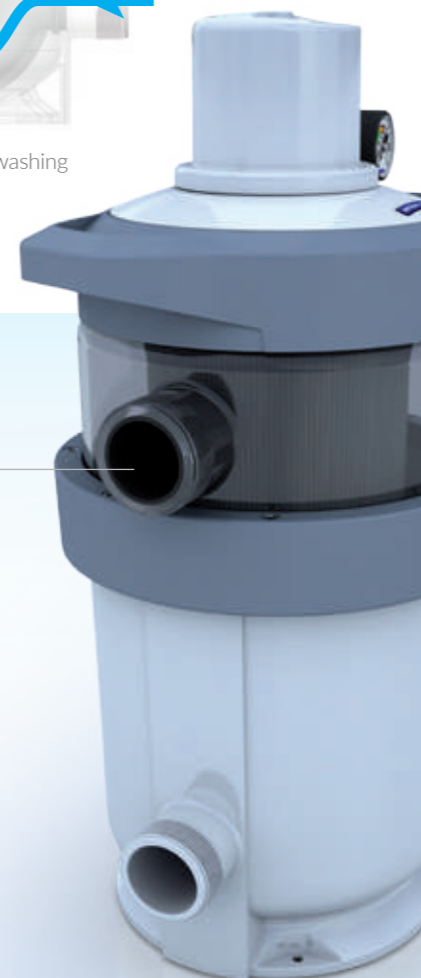
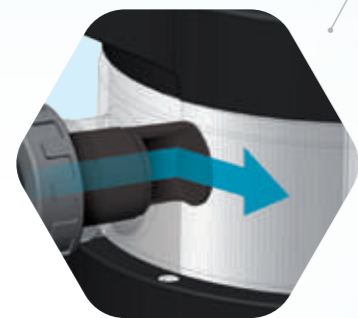


### More efficient

Both the NanoFiber filter material and the central manifold shower system are exclusive to AstralPool.

More efficient filtration: water flow redirection system

The water flow is tangentially directed. This innovative feature means that the dirt particles are more evenly distributed, which prolongs the filter's useful life.



# NanoFiber

Product range

#### NanoFiber Manual



NanoFiber Manual 150  
Flow rate: 10 m<sup>3</sup>/h  
Pools up to 50m<sup>3</sup>

NanoFiber Manual 180  
Flow rate: 15 m<sup>3</sup>/h  
Pools up to 75m<sup>3</sup>

NanoFiber Manual 200  
Flow rate: 18 m<sup>3</sup>/h  
Pools up to 90m<sup>3</sup>

#### NanoFiber Auto



NanoFiber Automatic 150  
Flow rate: 10 m<sup>3</sup>/h  
Pools up to 50m<sup>3</sup>

NanoFiber Automatic 180  
Flow rate: 15 m<sup>3</sup>/h  
Pools up to 75m<sup>3</sup>

NanoFiber Automatic 200  
Flow rate: 18 m<sup>3</sup>/h  
Pools up to 90m<sup>3</sup>

#### Recambios Filtro



Replacement filter 150  
65383



Replacement filter 180  
65384



Replacement filter 200  
65385

Auto NanoFiber adapter Kit  
(for installation on manual NanoFiber filters)



ASTRALPOOL 

info@astralpool.com  
www.astralpool.com

FLUIDRA 

# NanoFiber

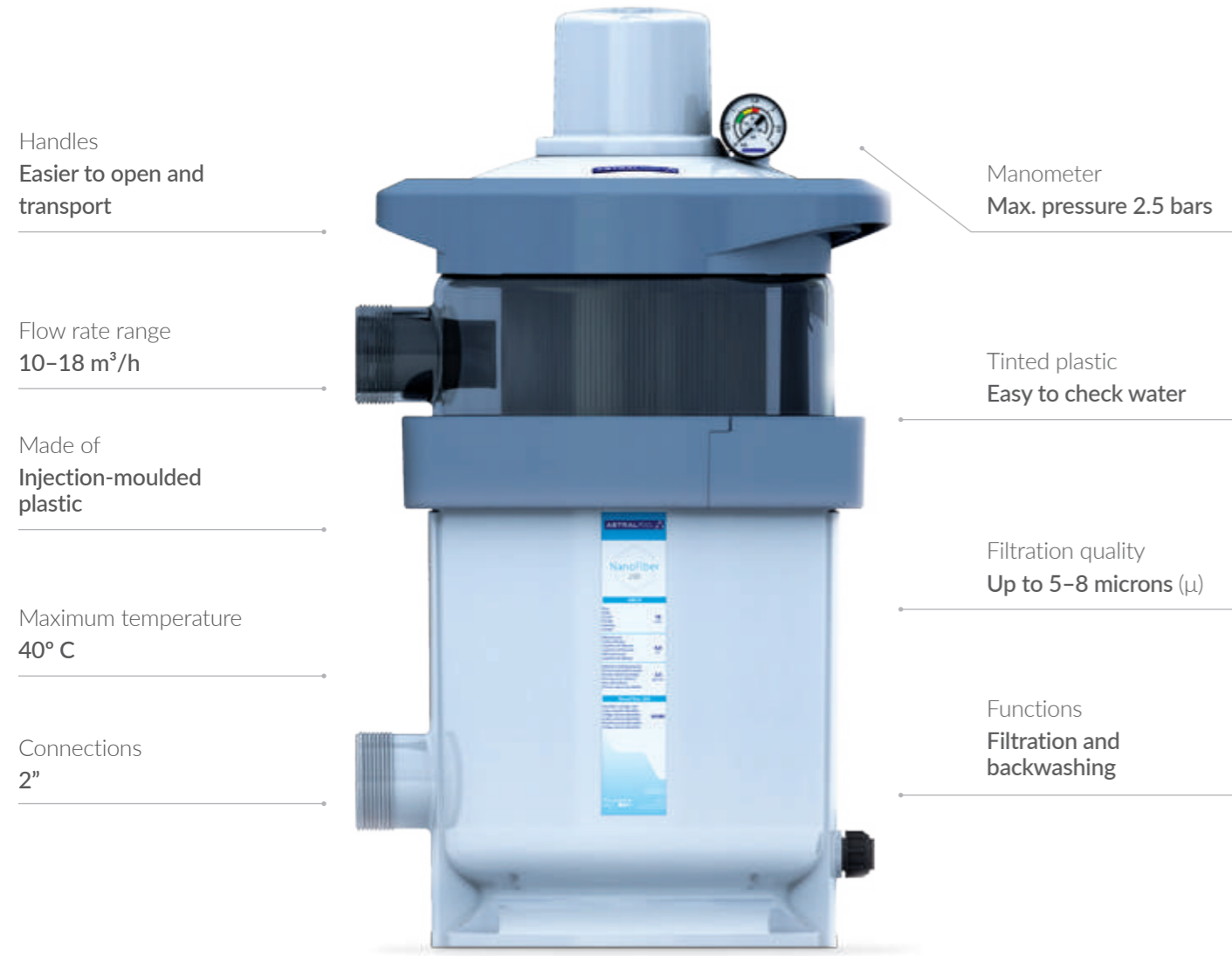
FILTER

SIMPLE AND RELIABLE



## New NanoFiber filter

Optimum design and performance



## Advantages at your fingertips

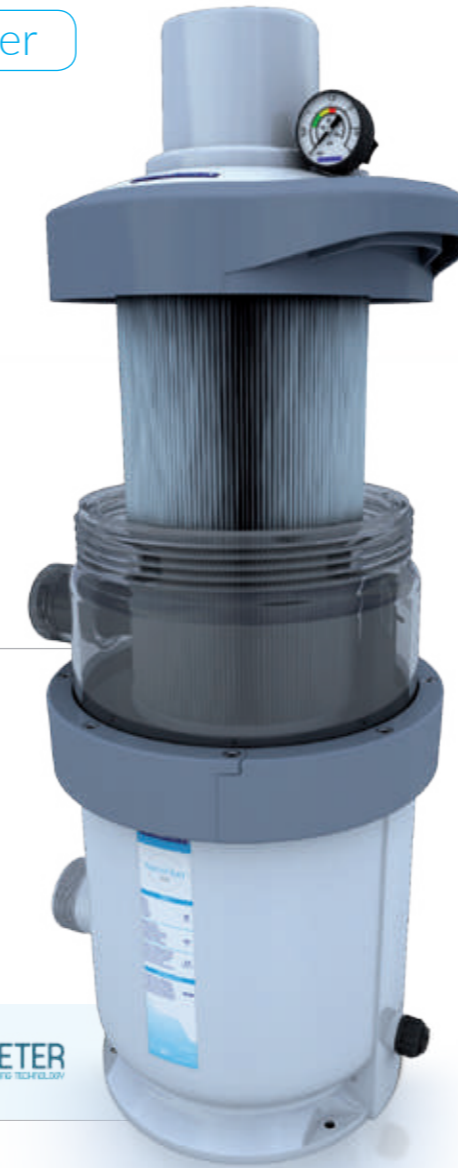
Innovation: NanoFiber

- ✓ Easy to use
- ✓ Reliable
- ✓ Lower water consumption
- ✓ Higher water filtration quality
- ✓ Compact
- ✓ Easy to clean
- ✓ Dirt slow to build up without limescale
- ✓ Compatible with current or existing filtration and pump systems
- ✓ Replaceable filtration media

A comparative report on filtration efficiency carried out through physiochemical testing by an external laboratory\* confirmed that:

- 1) The average overall size of the pores is bigger than that of other filtration systems
- 2) Water is filtered evenly through the porous nanofibres material, which avoids the build-up of limescale.

The NanoFiber filter provides a less selective but more efficient filtration.



\*Porosimetry study carried out by Porometer NV

## NanoFiber models.

Manual and automatic models



NanoFiber Manual

The filter is cleaned by manually turning it using the selector valve.



NanoFiber Auto

If there is a manual selector valve, the filter is cleaned by pressing the button on top of the unit.



If there is an automatic selector valve, the filter is cleaned automatically.

The self-cleaning NanoFiber filter for pools is not a traditional filter. The difference lies in the material used to make the filter. The innovative material used to make the filter is of a higher

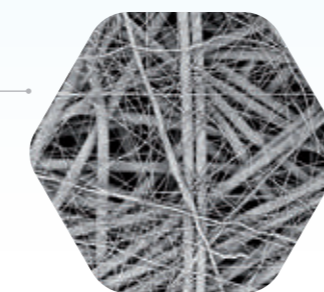
quality than other filters thanks to the nanofibre network. Moreover, its ease of handling makes the NanoFiber the perfect choice of filter.



Reduced size (mm): Ø 400 x 755

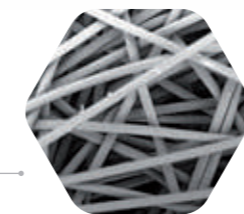
### The secret

#### New filter with nanofibres



NanoFiber filter

Filtration level up to 5-8 µ



Standard filter WITHOUT nanofibres

Filtration level 20 µ

The NanoFiber's filter material does not become impregnated with dirt, which improves the quality of water: after backwashing the flow rate returns to practically the same level each time.

### Comparison of filter types

NanoFiber, the best option.



Diatom



Cartridge



NANOFIBER

Compact	● ● ● ●	● ● ● ●	● ● ● ●
Handling/Use	● ○ ○ ○	● ● ○ ○	● ● ● ○
Maintenance	● ○ ○ ○	● ● ○ ○	● ● ● ●
Filtration level	● ● ● ●	● ● ○ ○	● ● ● ○
Filter medium replacement	● ● ● ○	● ● ● ●	● ● ● ●
Water consumption for backwashing	● ● ○ ○	● ● ● ●	● ● ● ●
Automation	● ○ ○ ○	● ○ ○ ○	● ● ● ●
Useful life of filter medium	● ○ ○ ○	● ● ○ ○	● ● ● ○
Design	● ○ ○ ○	● ○ ○ ○	● ● ● ●
<b>SCORE</b>	<b>16</b>	<b>22</b>	<b>32</b>

**BEST OPTION**

patent pending