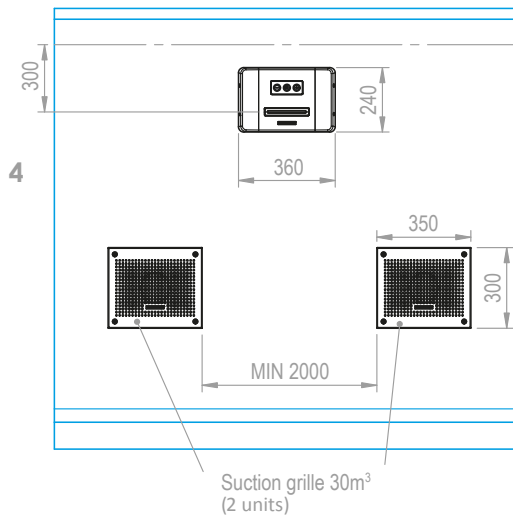




Countercurrent
swimming unit

Advance ND

The water outlet through side slats brings innovation to counter-current units and top performance



Kit made up of:

- Countercurrent swimming unit with polished AISI 316 stainless steel front cover.
- Illuminated piezoelectric push button.
- Air-water return nozzle, flow rate of 25–50 m³/h adjusted from a variable speed drive and has a built-in suction system.
- Suction grille of 30 m³/h made of polished AISI 316 stainless steel (2 units)
- 5.5 cv pump 3~400 V
- Power control cabinet
- Flow rate of 25 to 50 m³/h
- Maximum flow rates of 12 m/s at the unit's outlet; 2.4 m/s 1 m away; 1.7 m/s 1.5 m away; and 1.5 m/s 2 m away.

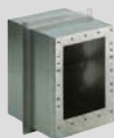
Advance ND

Code	Description
65497	Advance ND counter-current unit for concrete pools
66043	Advance ND counter-current unit for liner pools

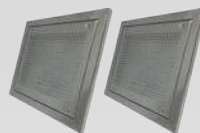
Components included



Nozzle assembly



AISI 316 stainless steel
housing



Two suction grilles with a
capacity of 30 m³/h



5.5 cv pump



Control box and variable
speed drive