

HARVIA HGD

HGD45 | HGD60 | HGD90 | HGD110 | HGD150

The Harvia HGD steam generator is a source of well-being and relaxation. Thanks to its easy-care structure and large water container, HGD is also excellently suited for heavy-duty spa use – tasked with providing your customers with perfect moments of relaxation for the mind and body, 24/7.

The touch-screen control panel of the steam generator allows you to easily add to the atmosphere with the help of lighting and fragrances. You can control all the steam generators in your spa with one control panel. The perfect steam sauna experience is guaranteed by Harvia's more than 60 years of experience in heat technology as a source of well-being.

Advantages

- Easy maintenance
- Titanium heating elements that assure long lifetime in rich mineral waters
- Components like heating elements and relays are easy to replace if worn out
- Open construction – direct access to serviceable parts
- Water level sensor integrated to water tank for easy maintenance

Features

Main material : Steel

H x W x D : 435.0 x 460.0 x 220.0 mm

Installation location : Wall



Net weight (kg) : 11.8

Water container volume : 7.0

ID	GTIN	Output (kW)	Steam output (kg/h)	Steam room size min - max m3
HGD45	6417659022286	4.5 kW	5.5	2.0-7.0
HGD60	6417659022293	6 kW	7.6	2.0-11.0
HGD90	6417659022309	9 kW	12	3.0-17.0
HGD110	6417659022316	10.8 kW	14.6	6.0-21.0
HGD150	6417659022323	15 kW	20.1	8.0-28.0

Related products



ZG-700



ZG-900



WX312



HWS1500EU

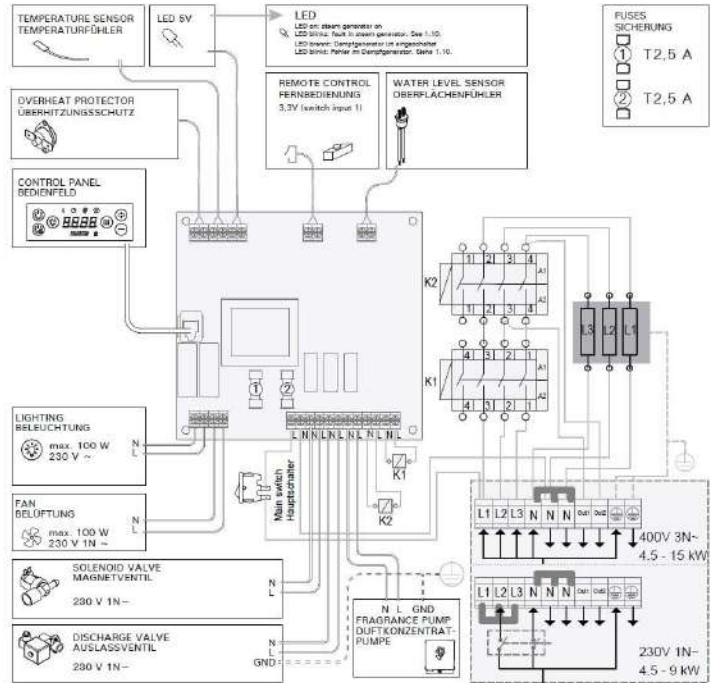


HWF01M

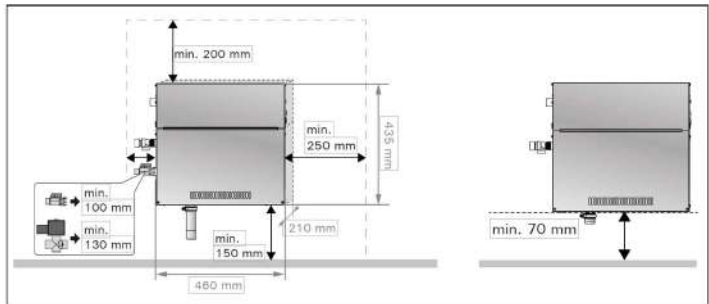
Spare parts

Product	ID	Pcs
Heat.elem.1500W/230V Titan/wiring	ZG-330T	3
Helix control panel complete	WX602	
Manual discharge valve HGS/HGX	ZG-575	1
Overpressure valve HGS/HGX	ZG-580	1
Contactor ABB LS.17.10 230V	ZSK-778	1
Sediment cup	ZSTM-170	1
Circuit board steam.gen. 2018	WX645	1
Solenoid valve HGD	ZG-379	1
On/off electric switch	ZSK-684	1
Installation flange	ZVR-653	
Water level sensor	ZSG-092	1
Nut	ZSG-014	1
Water tank HGD	ZSGR-010	
NUT HGD Water level sensor	SPZSG-014	
Water tank complete HGD	SPZSGR-010	
Heating element 1500W 230V, Steam	SPZG-330T	3
Control panel Xafir Harvia steam generators	SP602	
Drain valve hot water HGS/HGX	SPZG-575	
Overpressure valve 0,5 BAR HGS/HGX/HGP	SPZG-580	
Contactor 4 blocks 30A 100-240VACDC 50/60 Hz	SPZSK-778	
Sediment cup silicone, transparent	SPZSTM-170	
Circuit board steam (gen.2018) power unit	SP645	
Solenoid valve HGD	SPZG-379	
power switch and cover, white	SPZSK-684	
Water level sensor HGD	SPZSG-092	

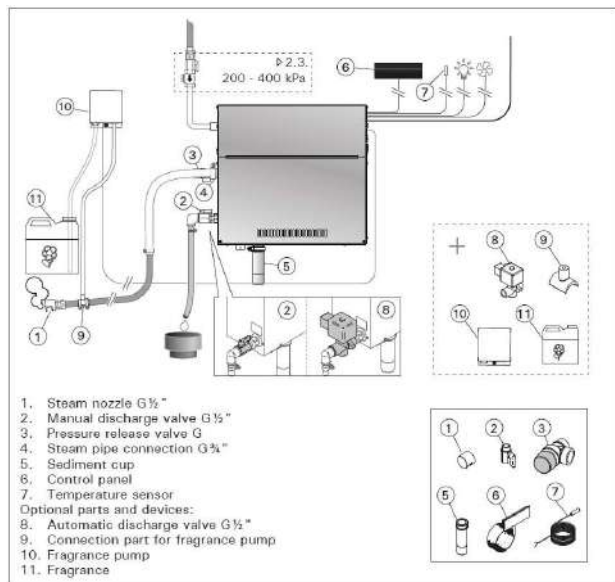
Board Connections



Installation measurements



Connections



Technical details

Technical data	Type / attribute	HGD45	HGD60	HGD90
	Power output	4.5 kW	6 kW	9 kW
	Fuses (400V3N~) pcs x ampers	3 x 10 A	3 x 10 A	3 x 16 A
	Fuse (230V1N~) ampers	25 A	32 A	40 A
	Max. Connection power for light	100.0	100.0	100.0
	Max. Connection power for fan	100.0	100.0	100.0
	Max. Connection power for OUT1	50.0	50.0	50.0
	Max. Connection power for OUT2	50.0	50.0	50.0
	Switch input voltage	3.5	3.5	3.5
	IP Class (like: IPX4)	IPX2	IPX2	IPX2
	Steam output capacity (kg/h)	5.5	7.6	12
Dimensions	Product width	460.0	460.0	460.0
	Product height	435.0	435.0	435.0
	Product depth (mm)	220.0	220.0	220.0
	Net weight (kg)	11.8	11.8	11.8
	Water container volume	7.0	7.0	7.0
	Sensor cable length	5.0	5.0	5.0
	Control unit cable length	5.0	5.0	5.0
Connections	Steam out connections	G $\frac{3}{4}$ " male	G $\frac{3}{4}$ " male	G $\frac{3}{4}$ " male
	Water in connections	G $\frac{3}{4}$ " male	G $\frac{3}{4}$ " male	G $\frac{3}{4}$ " male
	Incoming water pressure bar	min. 2,0 - max. 4,0	min. 2,0 - max. 4,0	min. 2,0 - max. 4,0
	Water out connections	G $\frac{1}{2}$ " female	G $\frac{1}{2}$ " female	G $\frac{1}{2}$ " female
	Supply cable (400V 3N~) mm ²	5 x 1,5 mm ²	5 x 1,5 mm ²	5 x 2,5 mm ²
	Supply cable (230V 1N~) mm ²	3 x 6	3 x 6	3 x 10
	Light lead (230 V 1N~) mm ²	1.5	1.5	1.5
	Fan lead mm ²	1.5	1.5	1.5
	Sensor lead (230 V 1N~) mm ²	0.5	0.5	0.5
Room volumes	Steam room size light wall (acrylic, etc.) not ventilated	2.0-7.0	3.5-11.0	9.0-17.0
	Steam room size light wall (acrylic, etc.) ventilated	2.0-5.0	2.8-8.0	6.0-12.0
	Steam room size tiled light wall not ventilated	2.0-6.0	3.0-9.0	7.5-14.0
	Steam room size tiled light wall ventilated	2.0-4.0	2.0-6.0	4.5-10.0
	Steam room size tiled stone wall not ventilated	2.0-4.5	2.0-7.5	6.0-11.5
	Steam room size tiled stone wall ventilated	2.0-3.5	2.0-5.0	3.0-8.0
Ambient conditions	Storage temperature	0.0-50.0	0.0-50.0	0.0-50.0
	Ambient temperature	10.0-30.0	10.0-30.0	10.0-30.0

Technical details

Technical data	Type / attribute	HGD110	HGD150
	Power output	10.8 kW	15 kW
	Fuses (400V3N~) pcs x ampers	3 x 16 A	3 x 25 A
	Fuse (230V1N~) ampers	N/A	N/A
	Max. Connection power for light	100.0	100.0
	Max. Connection power for fan	100.0	100.0
	Max. Connection power for OUT1	50.0	50.0
	Max. Connection power for OUT2	50.0	50.0
	Switch input voltage	3.5	3.5
	IP Class (like: IPX4)	IPX2	IPX2
	Steam output capacity (kg/h)	14.6	20.1
Dimensions	Product width	460.0	460.0
	Product height	435.0	435.0
	Product depth (mm)	220.0	220.0
	Net weight (kg)	11.8	11.8
	Water container volume	7.0	7.0
	Sensor cable length	5.0	5.0
	Control unit cable length	5.0	5.0
Connections	Steam out connections	G $\frac{3}{4}$ " male	G $\frac{3}{4}$ " male
	Water in connections	G $\frac{3}{4}$ " male	G $\frac{3}{4}$ " male
	Incoming water pressure bar	min. 2,0 - max. 4,0	min. 2,0 - max. 4,0
	Water out connections	G $\frac{1}{2}$ " female	G $\frac{1}{2}$ " female
	Supply cable (400V 3N~) mm ²	5 x 2.5 mm ²	5 x 2.5 mm ²
	Supply cable (230V 1N~) mm ²	N/A	N/A
	Light lead (230 V 1N~) mm ²	1.5	1.5
	Fan lead mm ²	1.5	1.5
	Sensor lead (230 V 1N~) mm ²	0.5	0.5
Room volumes	Steam room size light wall (acrylic, etc.) not ventilated	15.0-21.0	17.0-28.0
	Steam room size light wall (acrylic, etc.) ventilated	10.0-14.5	12.0-19.5
	Steam room size tiled light wall not ventilated	12.0-17.0	14.0-23.0
	Steam room size tiled light wall ventilated	8.0-12.0	10.0-16.0
	Steam room size tiled stone wall not ventilated	10.0-14.0	12.0-18.5
	Steam room size tiled stone wall ventilated	6.0-10.0	8.0-13.5
Ambient conditions	Storage temperature	0.0-50.0	0.0-50.0
	Ambient temperature	10.0-30.0	10.0-30.0